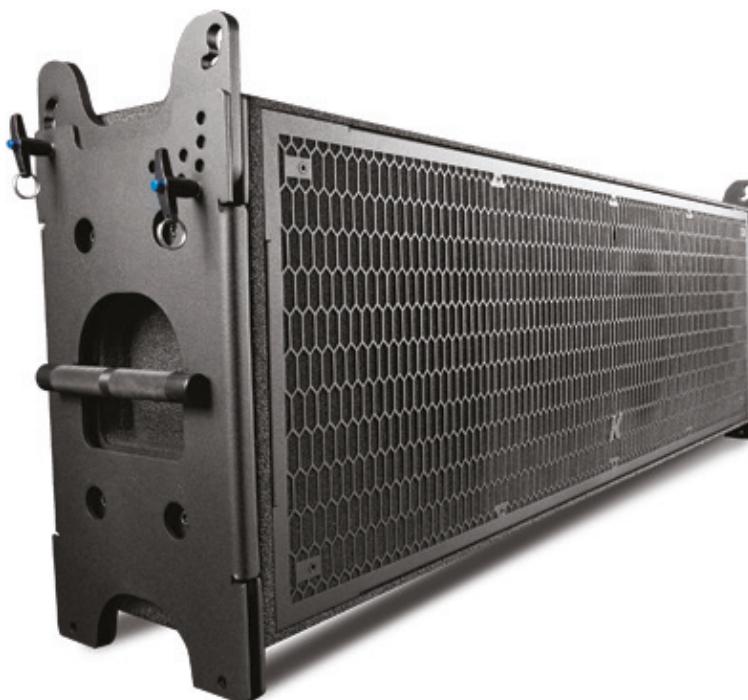


Mugello-KH3

Medium format, digital acoustic steering,
powered line array element



DATASHEET

Concert Series Mugello-KH3

DESCRIPTION

Research conducted over 10 years which was used to develop the next generation of touring systems, the Firenze Series, has also been applied to the new line of K-array speakers, the Concert Series.

This groundwork led to significant advancements including the ability to digitally steer the sound, the use of an onboard touch screen and an intelligent integration of capabilities such as various stacking and

hanging positions, weather resistance and integrated DSP multiple analog and digital inputs. And with the K-dante accessory, the system can be used in Dante network.

The company's signature compact design, Slim Array Technology, is also implemented. The KH3 in the K-array Concert Series was designed with larger scale events in stadiums, arenas, concert halls and theatres in mind. The unique performance-to-size

ratio measures up two large 12" neodymium magnet woofers with a 2.5" voice coil each and two 1.4" compression drivers with a 2.5" voice coil each.

The medium to large format speaker has the ability to drive sound farther.

All KH3 components are designed by K-array and custom-made under K-array's quality control system.

COLORS & PREMIUM FINISHES AVAILABLE



Black



White



Custom

SUGGESTED ACCESSORIES

K-HCBASE

K-DANTE

K-HCDOLLY

K-HCFLY

K-HCFLYST

K-HCLINK2/35

FEATURES



Visually
Discreet



Weather
Resistant



On-Board
Touch Screen



Compatible



Slim Array
Technology
(SAT)



Electronic
Beam Steering
(EBS)

FREQUENT APPLICATIONS

TOURING, FESTIVALS, CONCERTS & LIVE

LARGE CONGREGATIONS

THEATERS & CONCERT HALLS

NIGHTCLUBS

STADIUMS & SPORT VENUES

THEME PARKS

AUDITORIUMS, EDUCATION & GOVERNMENT

EVENT PRODUCTIONS

TECHNICAL SPECIFICATIONS

DATASHEET

Concert Series Mugello-KH3

ACOUSTICS		REMOTE CONTROL INPUT	
Power handling	1000 + 250 W	Connectors	1 male + 1 female XLR parallel / 1 USB B Jack serial converter
Max Power	2500 W ⁽¹⁾	AMPLIFIER	
Frequency range (-10 dB)	60 Hz – 19 kHz ⁽²⁾	Type	1 modules class D - DSP controlled
SPL 1W/1mt	100 dB ⁽³⁾	Nominal Power OutputIERS	2 x 1600 W @ 4 Ω 1% THD + NOISE ⁽⁵⁾
Maximum SPL	132 dB (cont.) – 138 dB (peak) ⁽⁴⁾	Protections	Over Temp. (Power Limiting – Thermal Shutdown), Short Circuit/Overload Output Protection,Power Limiting, Clip Limiter/Permanent Signal Limiter, High Frequency Protection
COVERAGE		AC POWER	
Horizontal	110°	Nominal power requirements	100 - 240 Vac ± 10% 50-60 Hz
Vertical	20° (preset dependent)	Operating Range	85 – 265 Vac (auto-range)
CROSSOVER		CONSUMPTION	
Type	Electronic	Power factor (cos)	>0.90 @ 4Ω full power
Frequency	1200 Hz	1/8 rated power (pink noise)@ 8Ω	300 W
TRANSDUCERS		CERTIFICATION	
Type	2 X 12" Neodymium magnet woofer with 2.5" voice coil 2 X 1.4" compression driver with 2.5" voice coil	IP	20 (53 with K-AMPCOVER accessory)
AUDIO IN/OUT		PHYSICAL OVERVIEW	
Analog Connectors	2 male + 2 female 3-pin balanced XLR	Dimensions	121.8 cm x 37.0 cm x 21.0 cm (47.95" x 14.56" x 8.26") ⁽⁶⁾
Digital Connectors	1 male + 1 female 3-pin XLR	Weight	43.6 kg (96.12 lbs) connecting hardware included
<div>Notes for data</div> <div>1. Maximum RMS applicable power for a musical signal. The reference signal is the one proposed by EIAJ standard</div> <div>2. With dedicated preset</div> <div>3. Measured @4 mt then scaled @1 mt</div> <div>4. Measured with musical signal</div> <div>5. EIAJ Test Standard, 1KHz, 1%THD</div> <div>6. (W x H x D)</div> <div>New materials and design are introduced into existing products without previous notice. Present systems may differ in some respects from those presented in this catalogue.</div>			

