

Sound Design Room | HD-1:

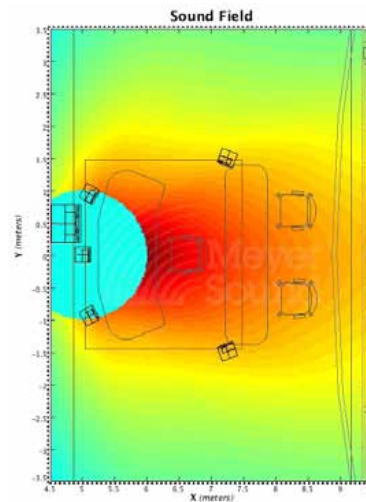
Designed for small near field environments from content creation to small private theatre.

Listening Distance

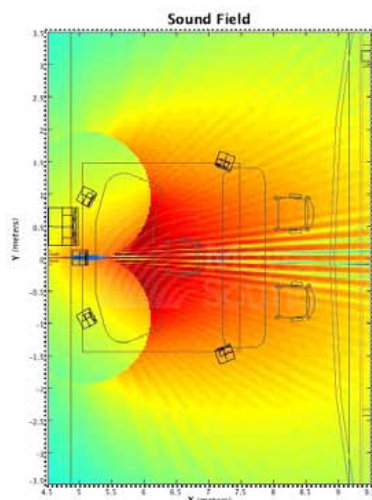
1m–2m

Typical Equipment List for a 5.1 Configuration

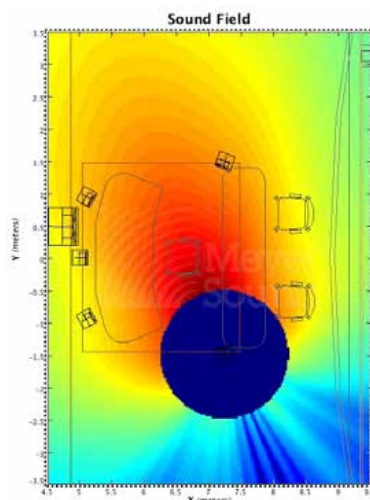
- 5 HD-1 Loudspeakers
- 1 500-HP, or X-800C Subwoofer
- 1 Galileo® 616 Loudspeaker Management System



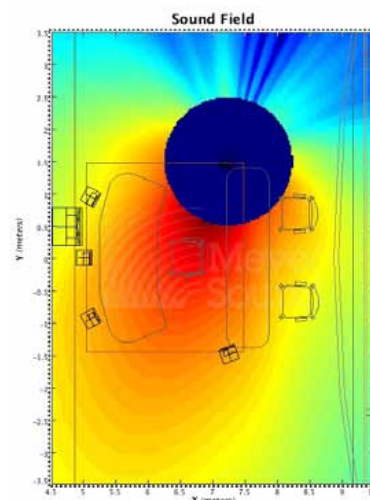
Center Plan at 4 kHz



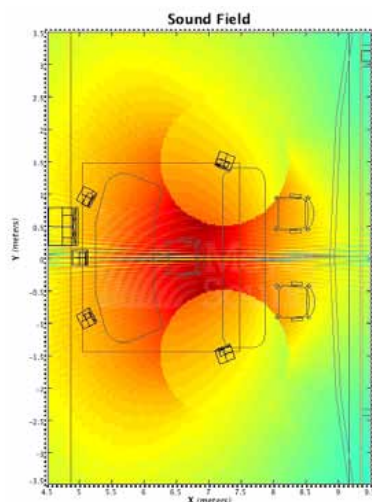
Left/Right Plan at 4 kHz



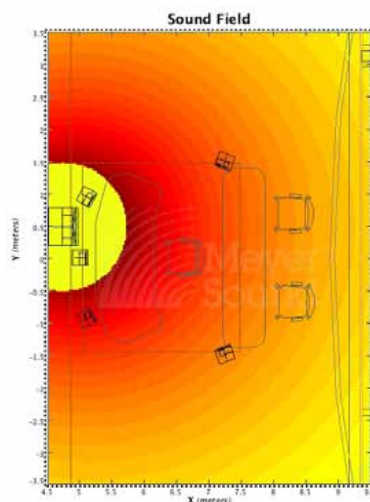
Left Surround Plan at 4 kHz



Right Surround Plan at 4 kHz



Surround Plan at 4 kHz



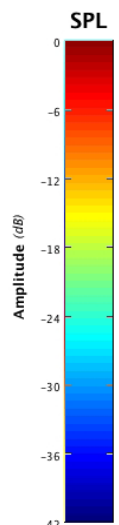
Subs Plan at 63 Hz

For all system design examples shown in this document:



Indicates an area where no data was collected due to proximity to the microphone.

Listening Distance Is Defined As:
The typical primary listening position which is the seat on the centerline of the room that is located approximately 2/3 of the way back in the space for exhibition spaces or at the primary mixing position in content creation spaces.



Large Editorial or Pre-Mix Room | Acheron[®] Designer:

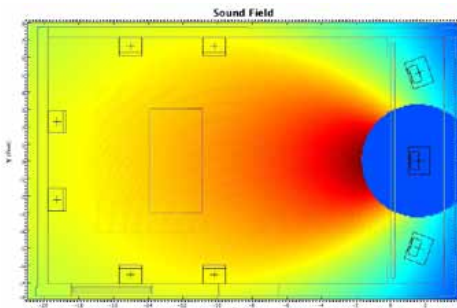
Designed for sound design suites, large editorial rooms, pre-mix rooms, or medium private theaters.

Listening Distance

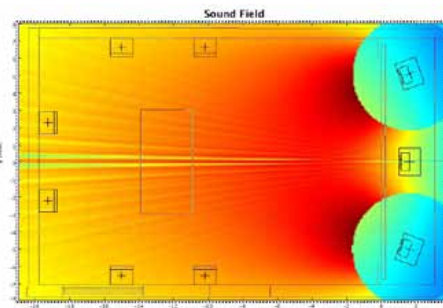
2m–5m

Typical Equipment List for a 5.1 Configuration

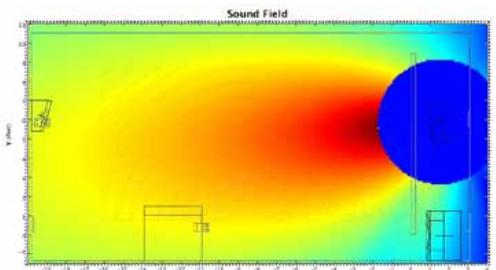
- 3 Acheron Designer Loudspeakers
(1 each for left, center, and right)
- 4–8 HMS-10 Surrounds
- 1 MPS-488 Power Supply
- 2–4 X-800C Subwoofers
- 2 Galileo[®] 408 Loudspeaker Management Systems



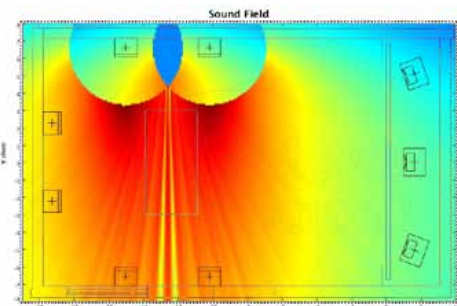
Center Plan at 4 kHz



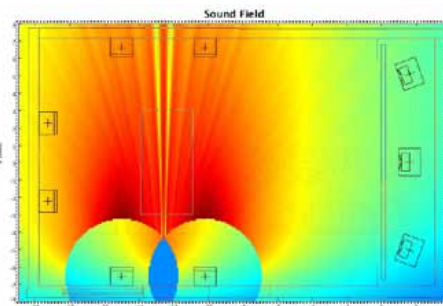
Left/Right Plan at 4 kHz



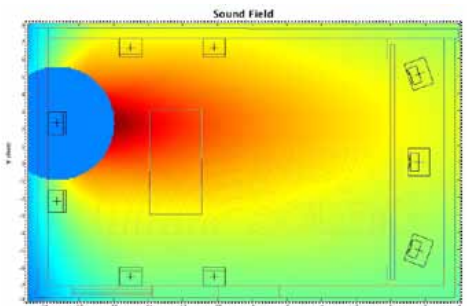
Section at 4 kHz



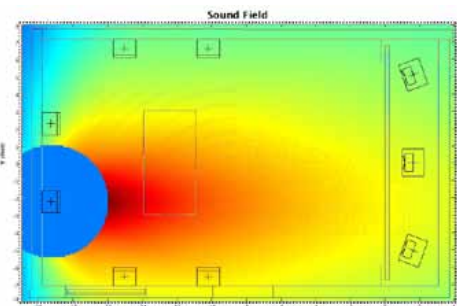
Left Surround Plan at 4 kHz



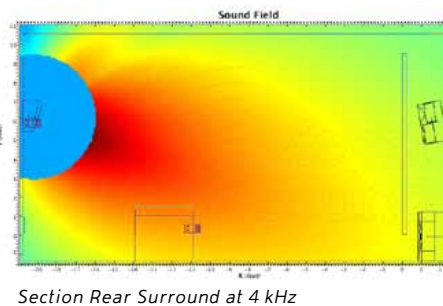
Right Surround Plan at 4 kHz



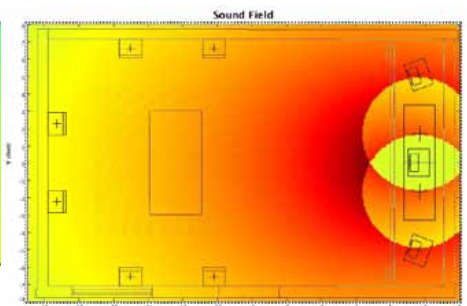
Back Surround Left Plan at 4 kHz



Back Surround Right Plan at 4 kHz



Section Rear Surround at 4 kHz



Subs Plan at 63 Hz

Small Theatre or Sound Design Room | Acheron® Studio:

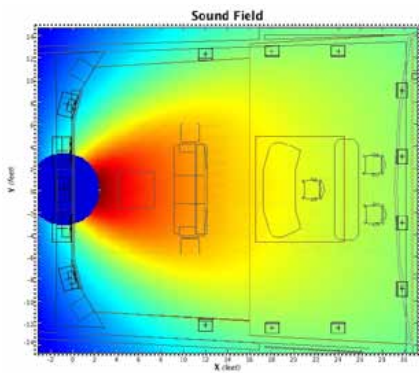
Designed for small mix rooms, small cinemas, or larger private theater.

Listening Distance

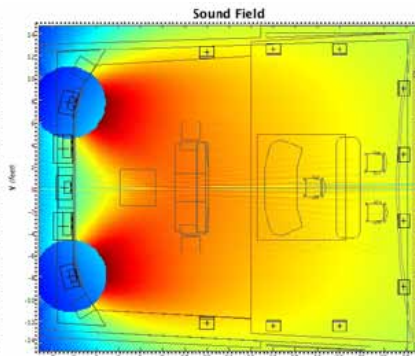
5m–9m

Typical Equipment List for a 7.1 Configuration

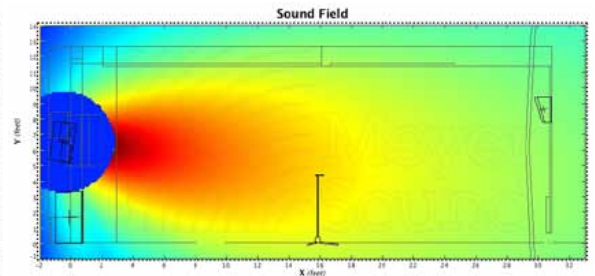
- 3 Acheron Studio Loudspeakers
(1 each for left, center, and right)
- 8–10 HMS–10 Surrounds
- 2 MPS–488 Power Supplies
- 2–4 X–800C Subwoofers
- 2 Galileo® 408 Loudspeaker Management Systems



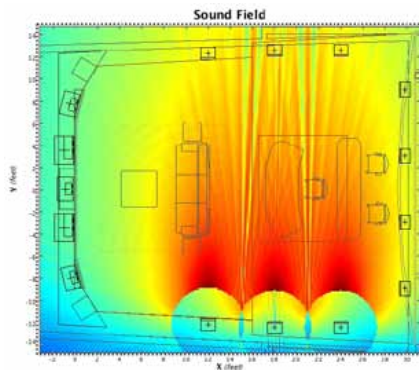
Center Plan at 4 kHz



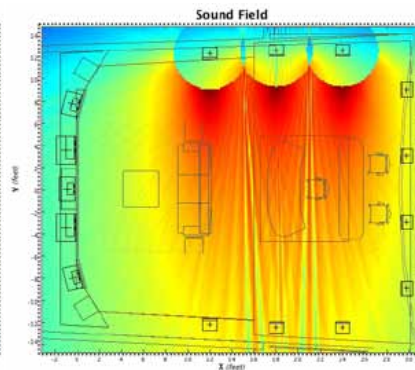
Left/Right Plan at 4 kHz



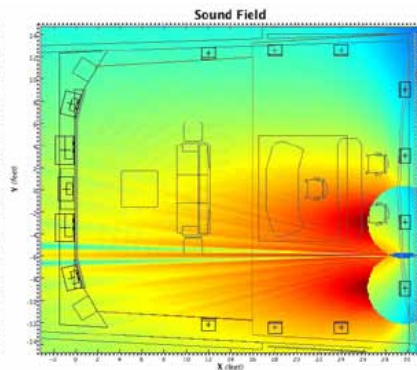
Section at 4 kHz



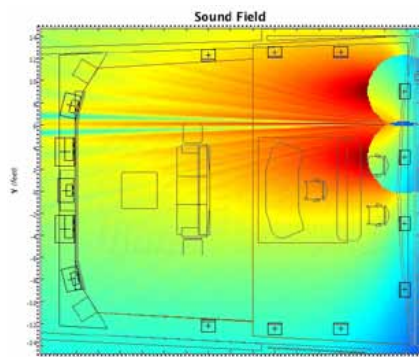
Left Surround Plan at 4 kHz



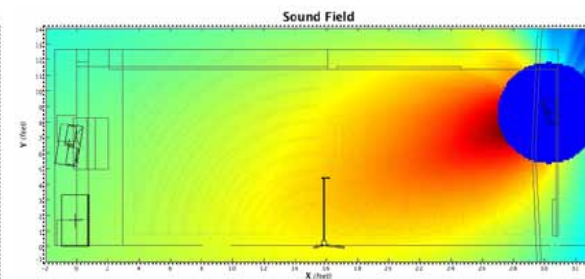
Right Surround Plan at 4 kHz



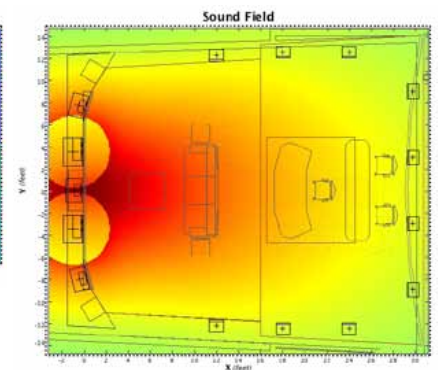
Back Surround Left Plan at 4 kHz



Back Surround Right Plan at 4 kHz



Section Rear Surround at 4 kHz



Subs Plan at 63 Hz

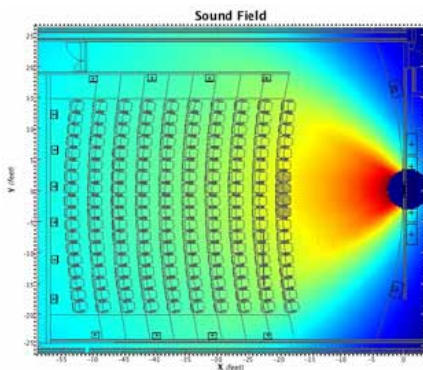
Medium Theatre | Acheron[®] 80/100: Designed for medium-sized mix rooms, or medium commercial exhibition cinemas.

Listening Distance

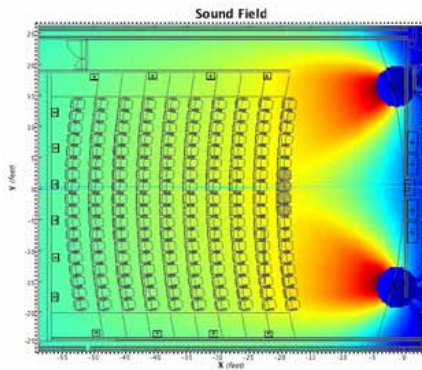
9m–13m

Typical Equipment List for a 7.1 Configuration

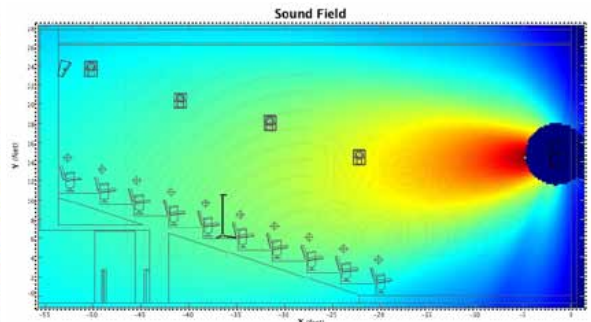
- 3 Acheron 80 or 100 Loudspeakers
(1 each for left, center, and right)
- 12–14 HMS-10 Surrounds
- 2–3 MPS-488 Power Supplies
- 4–6 X-800C Subwoofers
- 2 Galileo[®] 408 Loudspeaker Management Systems



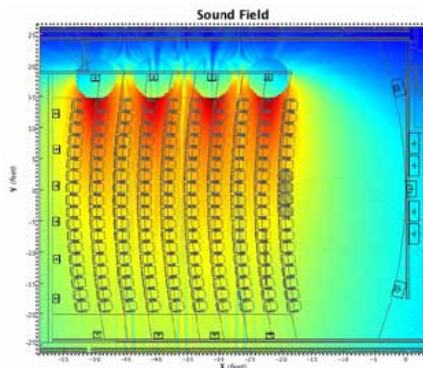
Center Plan at 4 kHz



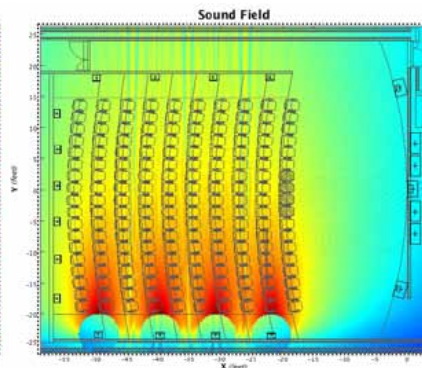
Left/Right Plan at 4 kHz



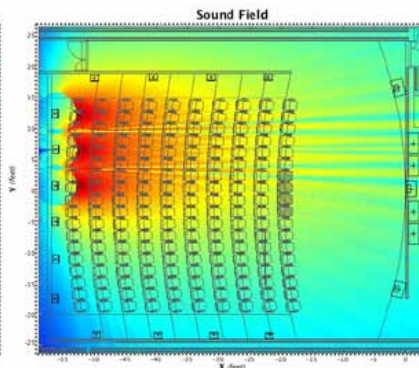
Section at 4 kHz



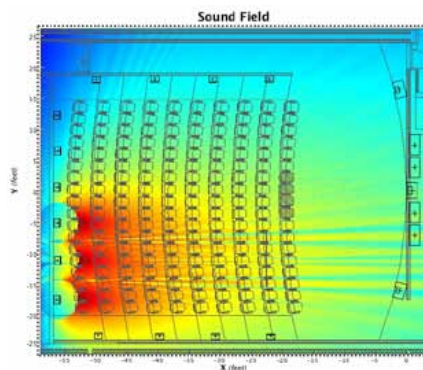
Left Surround Plan at 4 kHz



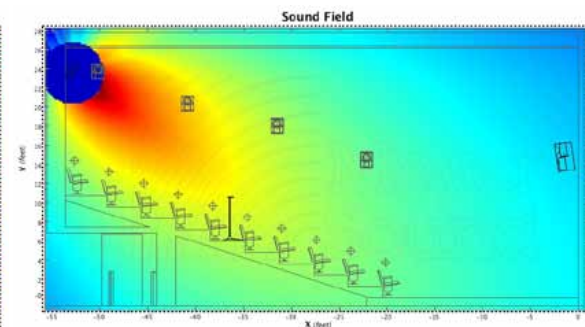
Right Surround Plan at 4 kHz



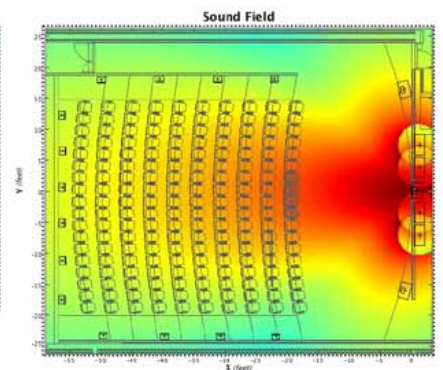
Back Surround Left Plan at 4 kHz



Back Surround Right Plan at 4 kHz



Section Rear Surround at 4 kHz



Subs Plan at 63 Hz

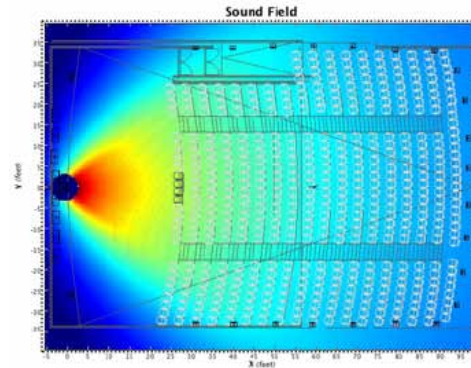
Large Theatre | Acheron[®] 80/100, Acheron LF: Designed for large mixing stages, and large commercial exhibition cinemas.

Listening Distance

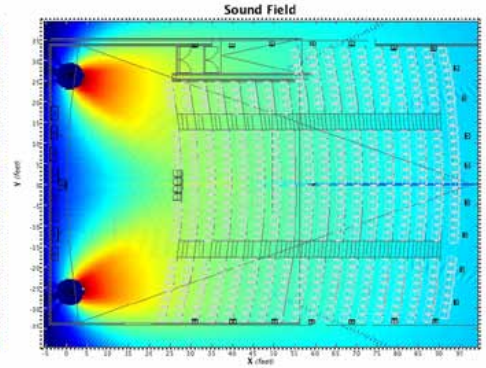
13m–26m

Typical Equipment List for a 7.1 Configuration

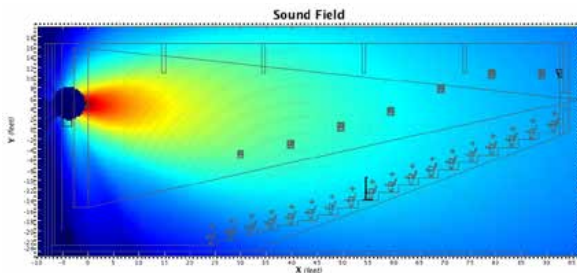
- 3 Acheron 80 or 100 Loudspeakers
(1 each for left, center, and right)
- 3 Acheron LF Bass Loudspeaker
- 16–22 HMS–10 Surrounds
- 3–4 MPS–488 Power Supplies
- 4–8 X–800C Subwoofers
- 2 Galileo[®] 408 Loudspeaker
Management Systems



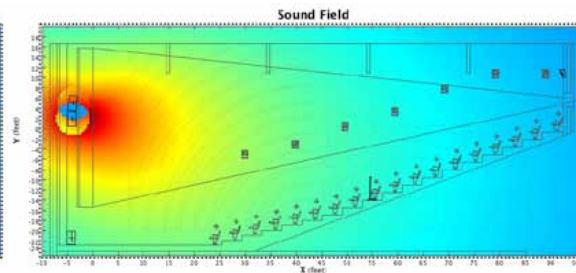
Center Plan at 4 kHz



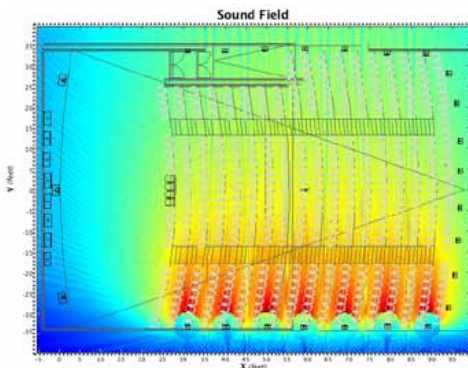
Left/Right Plan at 4 kHz



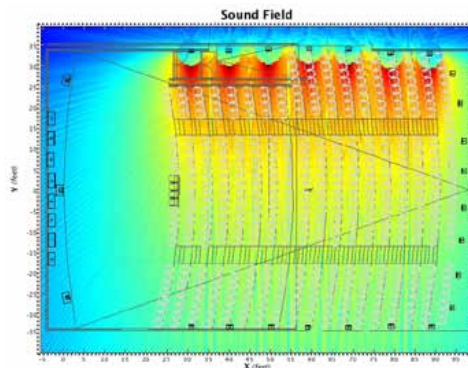
Section at 4 kHz



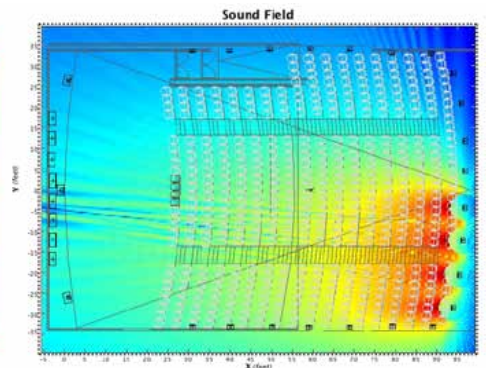
Section at 125 kHz



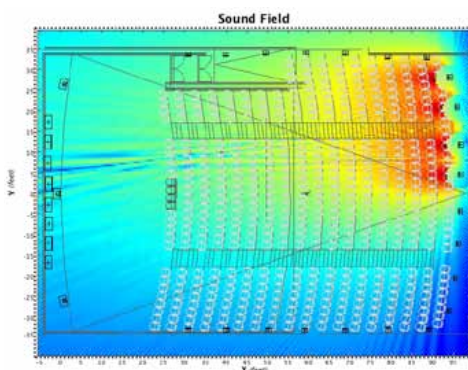
Left Surround Plan at 4 kHz



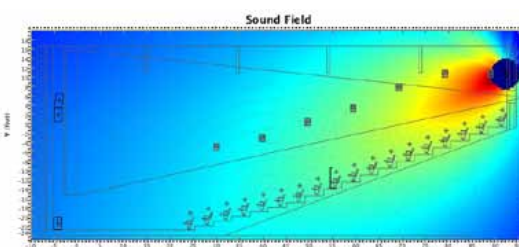
Right Surround Plan at 4 kHz



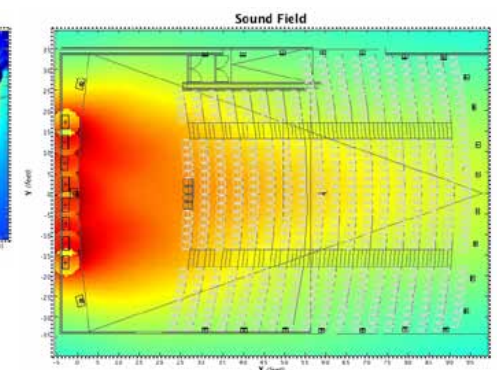
Back Surround Left Plan at 4 kHz



Back Surround Right Plan at 4 kHz



Section Rear Surround at 4 kHz



Subs Plan at 63 Hz

Very Large Theatre, Special, or Temporary Performance Venues

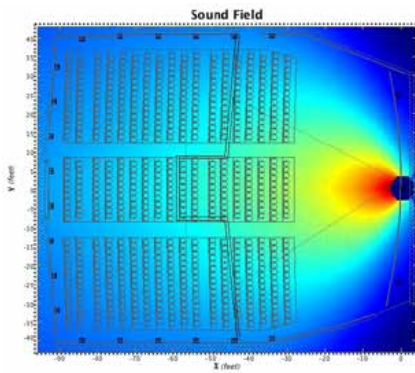
Listening Distance

Variable

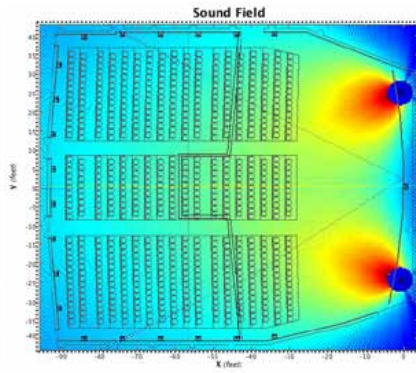
In order to provide flexible coverage and power levels in theatres where traditional cinema systems fall short, line array systems are the best approach to provide clear, powerful sound to every seat. Meyer Sound has successfully implemented MINA, M'elodie and MICA line array systems for very large cinemas, or in cinemas with hard-to-cover features such as a balcony or a unique shape.

Typical Equipment List for a 7.1 Configuration

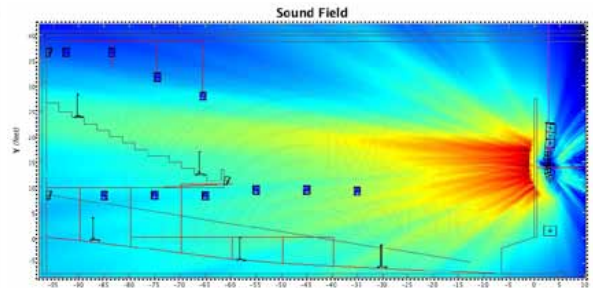
- 27–36 MINA Loudspeakers
- 38–42 HMS-10 Surrounds
- 5–6 MPS-488HPp Power Supplies
- 3–9 500-HP Subwoofers
- 10 X-800C Subwoofers
[or (8) 700-HP Subwoofers]
- 3 Galileo[®]408 Loudspeaker
Management Systems
- 3 MTF-MINA/M'elodie Rigging
- 3 MG-M'elodie Rigging
- 1 RMS Peripheral Kit



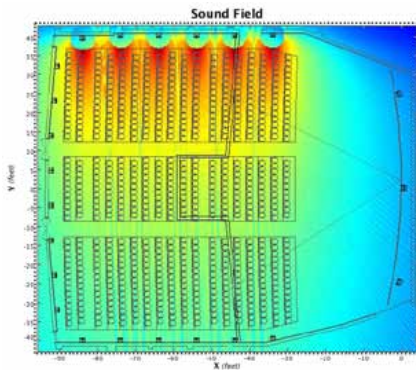
Ground Level Center Plan at 4 kHz



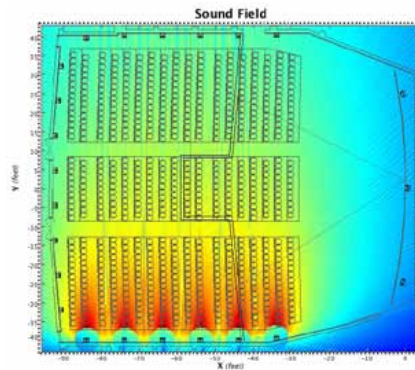
Ground Level Left/Right Plan at 4 kHz



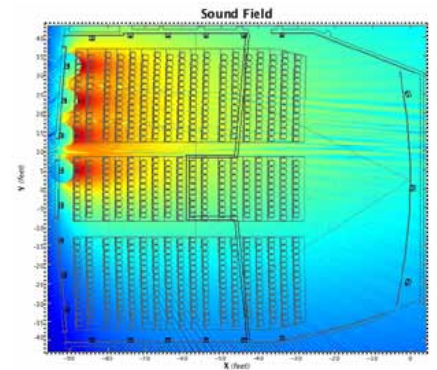
Section at 4 kHz



Ground Level Left Surround Plan at 4 kHz

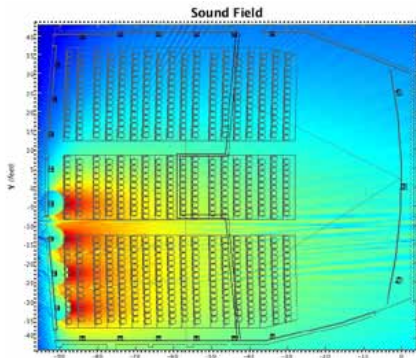


Ground Level Right Surround Plan at 4 kHz

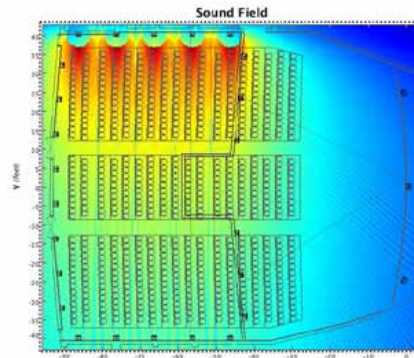


Ground Level Back Surround Left Plan at 4 kHz

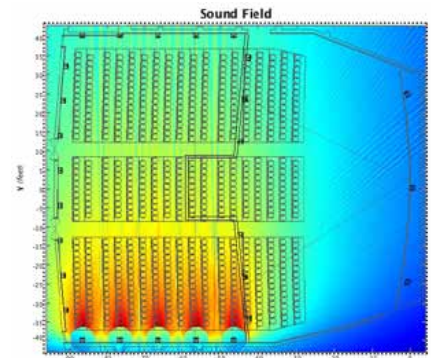
Very Large Theatre, Special, or Temporary Performance Venues (Cont'd)



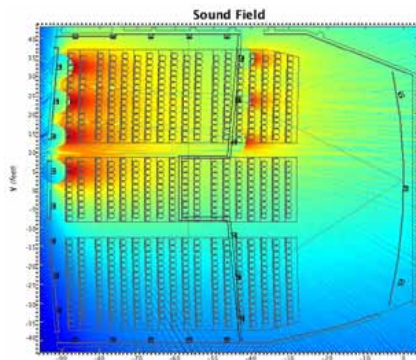
Ground Level Back Surround Right Plan at 4 kHz



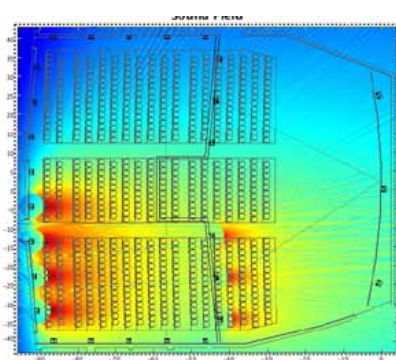
Balcony Level Left Surround Plan at 4 kHz



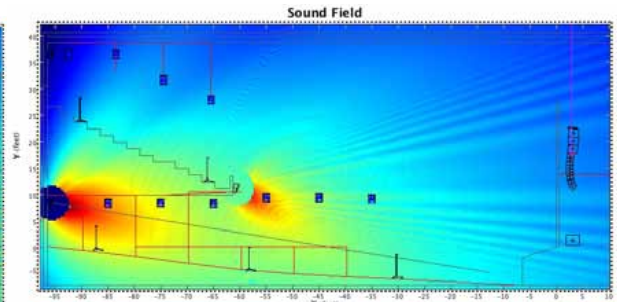
Balcony Level Right Surround Plan at 4 kHz



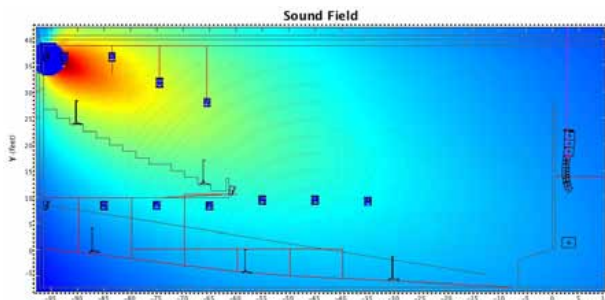
Balcony Level Back Surround Left Plan at 4 kHz



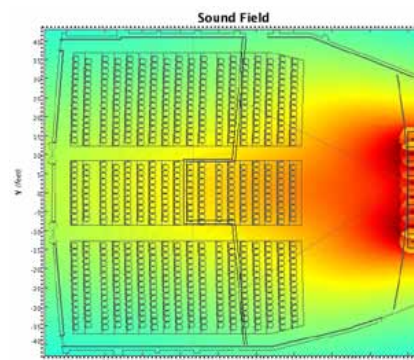
Balcony Level Back Surround Right Plan at 4 kHz



Section Ground Level Rear Surround at 4 kHz



Section Balcony Level Rear Surround at 4 kHz



Ground Level Subs Plan at 63 Hz



Meyer Sound Laboratories, Inc.
2832 San Pablo Avenue
Berkeley, CA 94702

www.meyersound.com/exp
T: +1 510 486.1166
F: +1 510 486.8356

Copyright © 2011
Meyer Sound Laboratories Inc. All rights reserved.
18.908.066.01 D